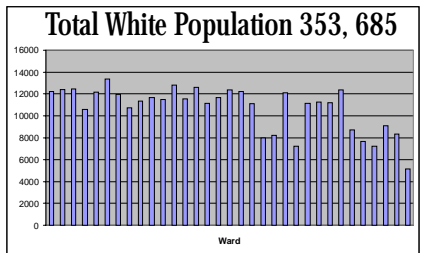
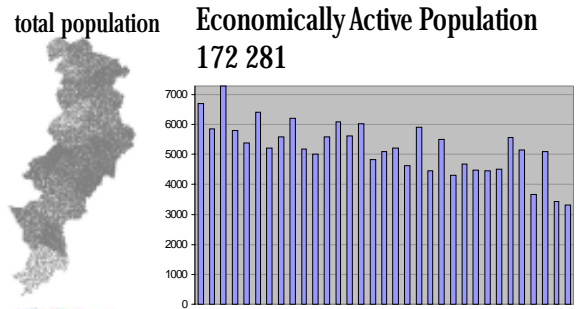
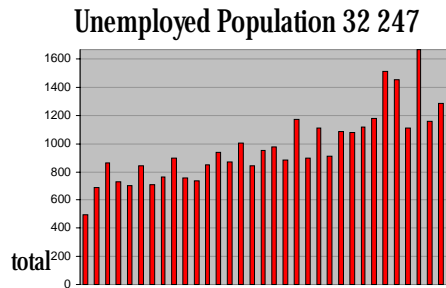
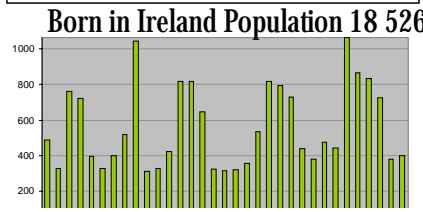


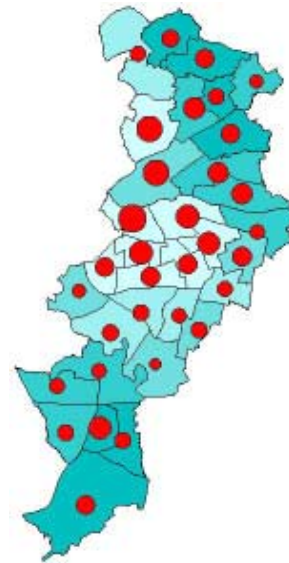
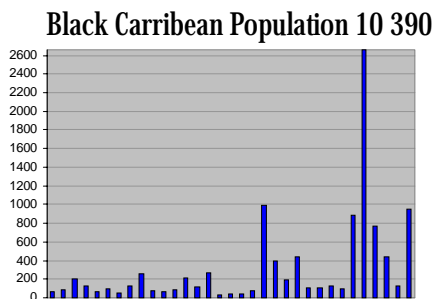
**Exploratory Graphics - Is there a relationship between ethnicity and unemployment?
Is there a spatial component to any relationship?**



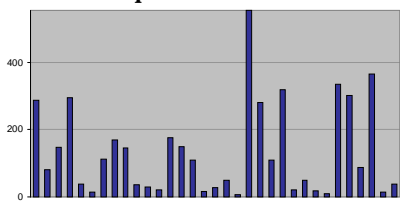
percentage white population and dot density of total unemployed



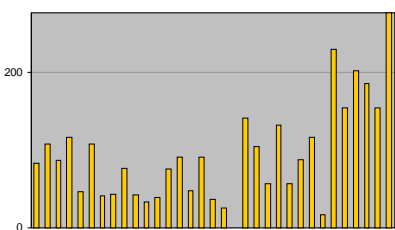
percentage white and percentage unemployed by district



Indian Population 4 404



Chinese Population 3 103



Bar charts - total population of selected ethnicities arranged by ascending percentage of unemployed (total population) by ward

Dot density maps population by ward , each dot represents 10 people